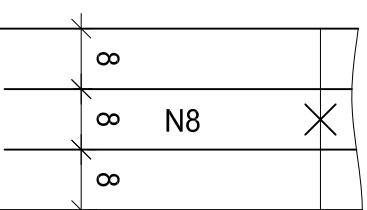
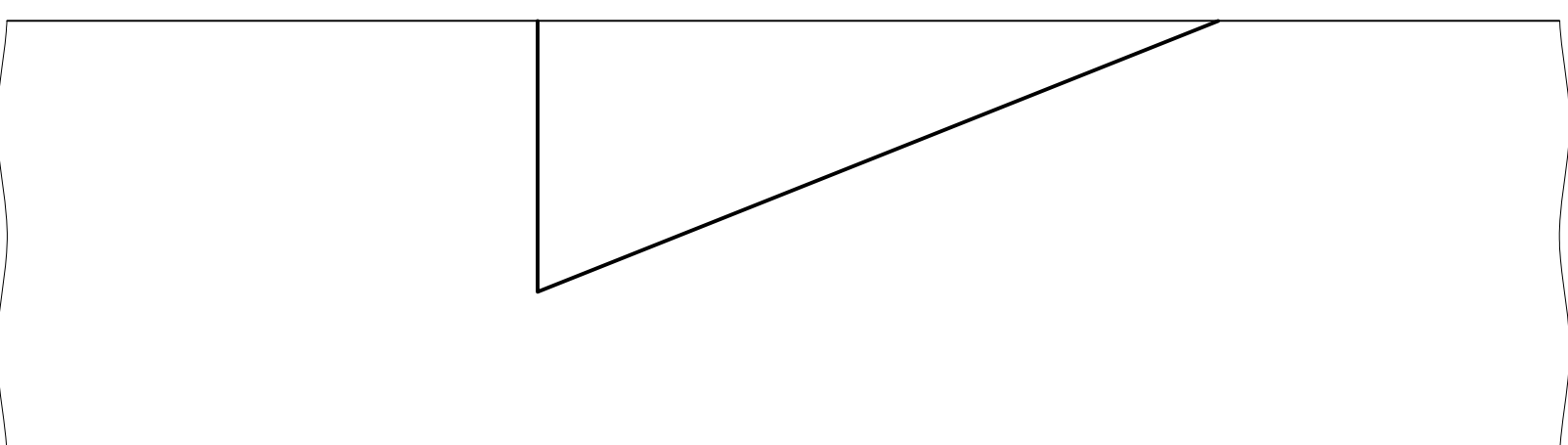


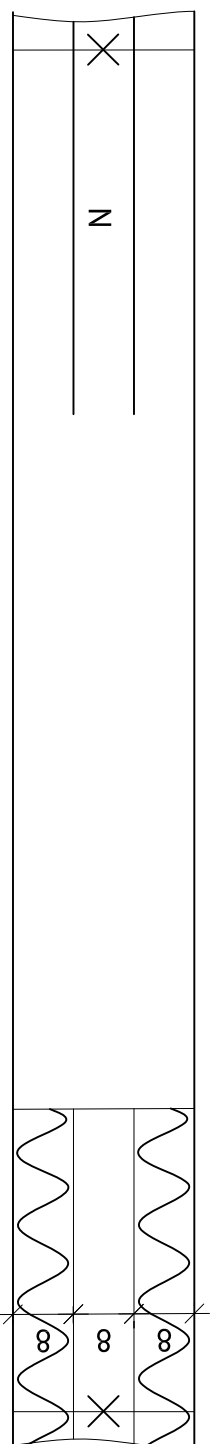
sinistra



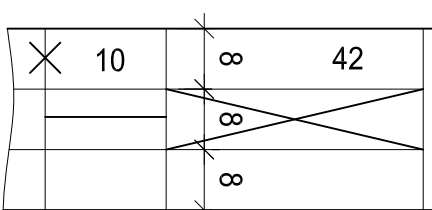
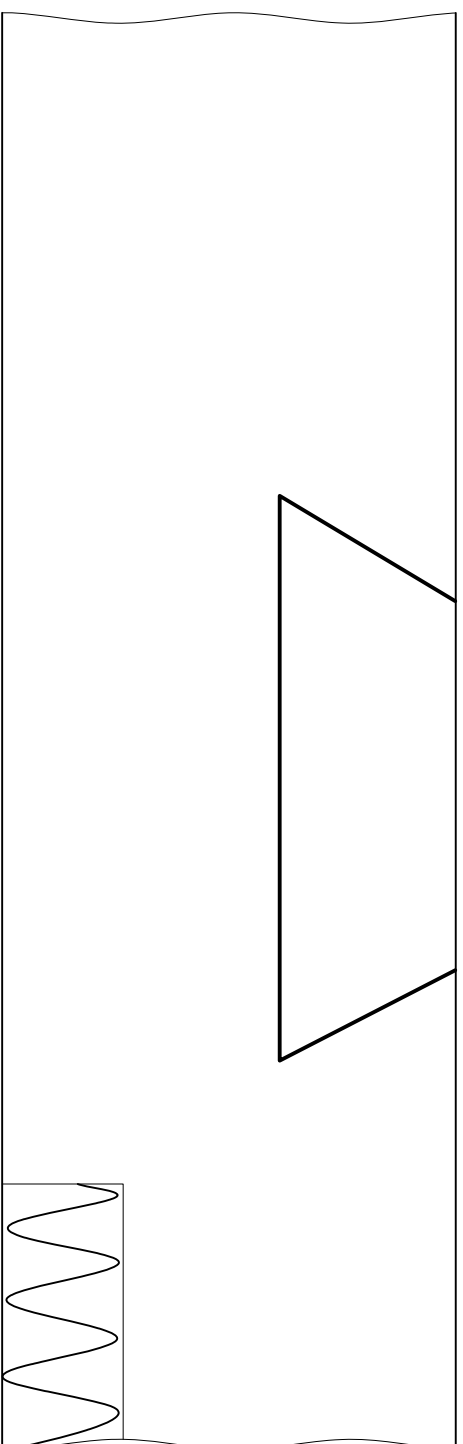
davanti



sopra



davanti



Tenone ridotto con anca, mortasa e scanalatura
Soluzione: tracciatura per macchina

VSSM

Verband Schweizerischer
Schreinermeister
und Möbelfabrikanten

Compito-nr.: esercizio 03

Scala: 1:1

Dimensione: 420 x 297

Data: 14.12.2015

ls